

The

**WGSS**

**WEEK**

**POT**

# WGSS WEEK 2016

FEBRUARY 21-27

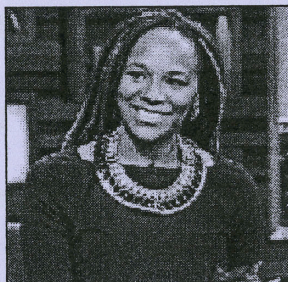
Check out the WGSS Art Wall in Lowry Center

## Wikipedia Edit-A-Thon

Monday, February 22  
3-5pm Andrews Library, CoRE

Join by going to our Wikipedia  
WGSS Week 2016 Meetup  
Website:  
[www.bit.ly/woowiki2016](http://www.bit.ly/woowiki2016)

## Keynote Speaker: Bree Newsome



## Student & Faculty Roundtable on the Politics of "Trigger Warnings"

Wednesday, February 24  
12pm-1pm in Andrews  
Library, CoRE

## "Tearing Hatred from the Sky"

Tuesday, February 23  
7:30pm Gault Recital Hall



Illustration by Bree Newsome

## Presentation and Reflection on the WGSS Wikipedia Edit-A-Thon

Friday, February 26  
12pm-1pm in Andrews  
Library, CoRE

Stay tuned for more WGSS-themed events:  
**Women of Ciudad Juarez:**  
(Directed by Jimmy Noriega, Theatre)  
March 2-5, [Freedlander Theatre](#)



## Marge Piercy

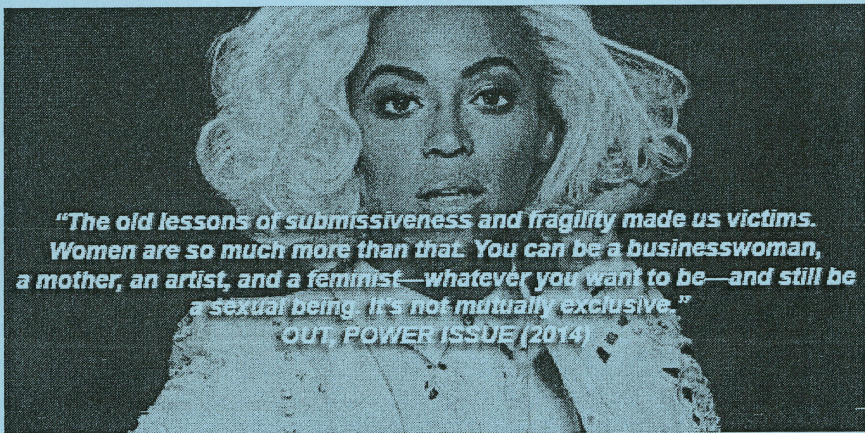
April 13, 7:30pm  
hosted by the  
English Department

- FEMINIST -  
MORE OF US  
SHOULD  
RECLAIM  
THAT WORD



CHIMAMANDA NGOZI ADICHIE

*Feminist is not a dirty word*

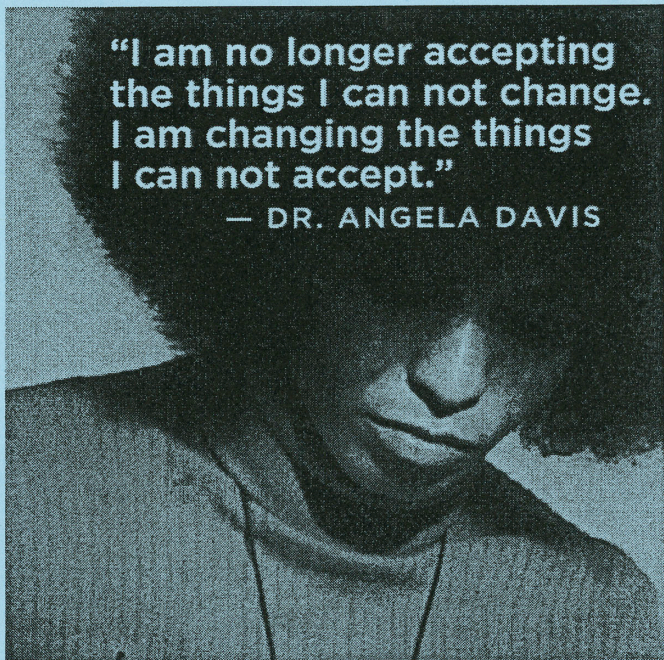


*"The old lessons of submissiveness and fragility made us victims. Women are so much more than that. You can be a businesswoman, a mother, an artist, and a feminist—whatever you want to be—and still be a sexual being. It's not mutually exclusive."*

*OUT, POWER ISSUE (2014)*

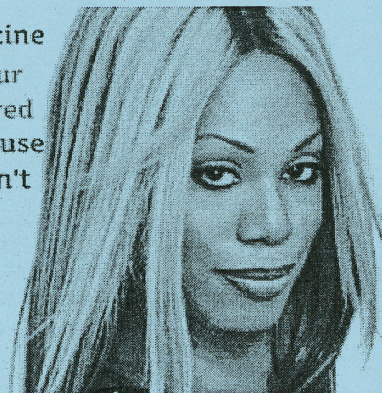
**"I am no longer accepting  
the things I can not change.  
I am changing the things  
I can not accept."**

**— DR. ANGELA DAVIS**



"I was on the cover of Time magazine  
in June and, that same month, four  
trans women of color were murdered  
in the United States. So just because  
I got an Emmy nomination doesn't  
mean the lives of trans people  
aren't in peril every day."

**- Laverne Cox**



# Common Grounds AT LARGE

Common Grounds is in **COMPTON**  
Basement for a short time only!

7-11 Weeknights

8-Midnight Weekends



 /CGWooster

 @CGWOOSTER

## Upcoming Apex Career

### Planning Events

Monday, Feb 22 and Friday, Feb 26:

LinkedIn Photos

APEX, 12:00pm - 2:00pm

Tuesday, Feb 23:

Recruiter from Christian Ministry in the

National Parks

Lowry Lobby, 11am - 1pm

Wednesday, Feb 24:

Walk-In Wednesday

APEX, 1:30pm - 4:00pm

Thursday, Feb 25:

LinkedIn Lab

APEX, 1:30pm - 4:00pm

**APEX**  
Advancing Planning. Enriching Learning.

# Women's History Month

To raise awareness for the Gender Wage Gap, tickets for the Festival of New Works will be priced accordingly.

For all female students who already get a free ticket, a special surprise awaits you at the Box Office.



March 2, 3,  
4, 5, 2016

@ 7:30 pm

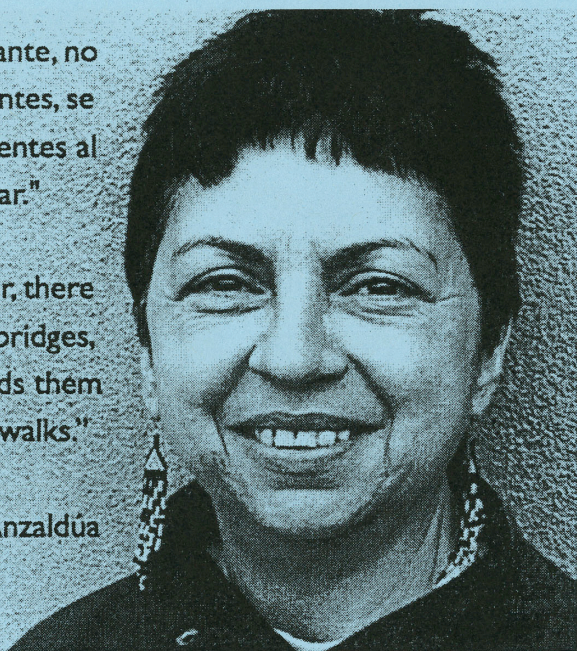
Shoolroy  
Theater

*For tickets, visit the Box  
Office or call 330-263-2241*

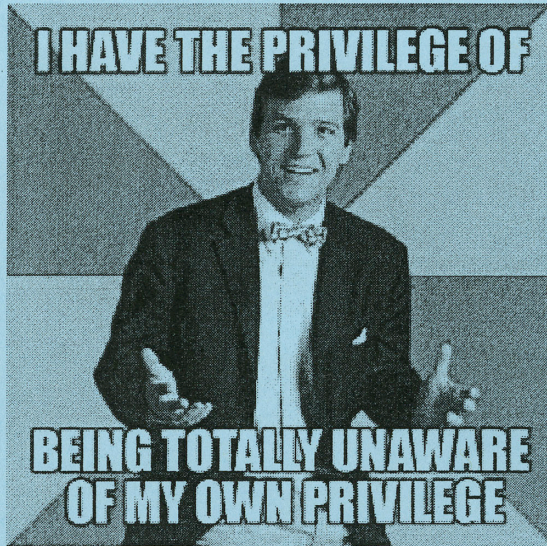
"Caminante, no  
hay puentes, se  
hace puentes al  
andar."

"Voyager, there  
are no bridges,  
one builds them  
as one walks."

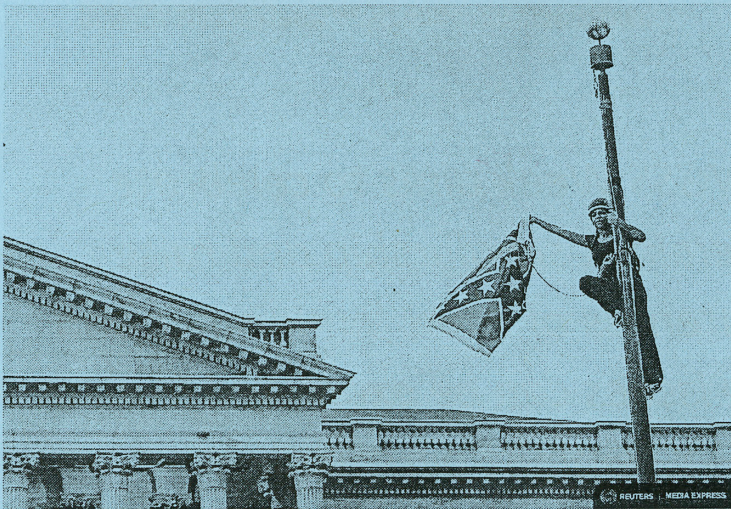
Gloria Anzaldúa



*WGSS Week aims to celebrate  
feminist scholarship and raise  
awareness of what feminism is and  
how issues can be examined from a  
feminist perspective.*



*Critical examination of one's positionality is essential*



*Bree Newsome removing the Confederate Flag from in Front of the SC State Capital*



WGGS WEEK PRESENTS

KEYNOTE  
SPEAKER

# BREE NEWSOME

AWARD-WINNING FILMMAKER, WRITER, ACTIVIST, AND COMMUNITY ORGANIZER

ON CIVIL RIGHTS ACTIVISM AND REMOVING SOUTH CAROLINA'S CONFEDERATE  
FLAG

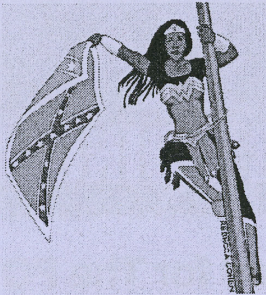


Illustration by Richard Cohen @gpcosm



**"TEARING HATRED FROM THE SKY"**

**FEB 23RD | 7:30 PM**

**Gault Recital Hall Of Scheide Music Center**

**SPONSORED BY:**

The Office of Multicultural Student Affairs | Office of International Student Affairs | Center for Diversity and Inclusion | Office of the Provost | Dean of Faculty Development | Queer Students Union | Cultural Events Committee | Black Students Association | Black Women's Organization and the Women's, Gender & Sexuality Studies Program



## How can I submit an ad for The POT?

Ad submissions should be typed or artfully composed with **black ink on white paper and no larger than 4" by 5"** (smaller & horizontal is preferred). Electronic submissions are only accepted in the following formats: **pdf, jpeg, or doc**. Text simply via email will not be accepted as you are responsible for creating your ads. Also, a **contact name, email address, & phone number MUST** be included with every ad submitted to The POT. Submissions to the POT can be dropped off in the POT Mailbox, located directly across from the Post Office in Lowry Center, or by emailing [pot@wooster.edu](mailto:pot@wooster.edu). Please indicate the dates you want the ad to run. The POT is printed Mondays & Thursdays. **Deadlines** for ad submissions are **5 pm every Sunday and Wednesday**. Any questions, comments, or suggestions should be directed to the POT Editor via [pot@wooster.edu](mailto:pot@wooster.edu) or Rachel Messenger (POT Supervisor) in Campus Life